

Recombinant CLEC3B/Tetranectin Monoclonal Antibody

catalog number: AN300062P

Note: Centrifuge before opening to ensure complete recovery of vial contents.

Description

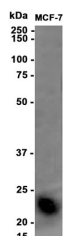
Reactivity	Human;Mouse;Rat
Immunogen	Recombinant Human Tetranectin / CLEC3B protein
Host	Rabbit
Isotype	IgG
Clone	A1172
Purification	Protein A
Buffer	0.2 µm filtered solution in PBS

Applications

Recommended Dilution

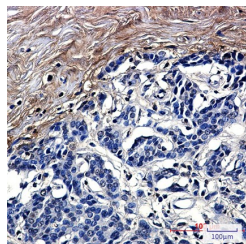
WB: 1:1000-1:5000; IHC-P: 1:200-1:1000

Data

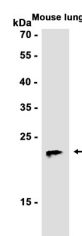


Western blot analysis of extracts from MCF-7 cells at 1:1000.

Observed-MW:23 kDa
Calculated-MW:23 kDa



Immunohistochemical analysis of paraffin-embedded human breast cancer .



Western blot analysis of extracts from Mouse lung tissue at 1:1000.

Observed-MW:23 kDa
Calculated-MW:23 kDa

Preparation & Storage

Storage	Store at -20°C Valid for 12 months. Avoid freeze / thaw cycles.
Shipping	Ice bag

Background

Tetranectin binds to plasminogen and to isolated kringle 4. May be involved in the packaging of molecules destined for exocytosis.

For Research Use Only